

Description

The KMC VEP-559 Series butterfly control valves are 2-way straight through for high capacity control in low-pressure hot water, chilled water, or steam applications. The rubber-lined butterfly valve require more actuator operating torque than a metal seat butterfly valve and should be used where reliable, bubble-tight shut-off is essential.

These valves are set for a full quarter-turn (90° rotation) for optimum flow characteristics. The valves come assembled in the normally closed position. The unique universal system of brackets and linkage allow for easy field changes of the action to normally open.

Features

- ◆ Utilizes control actuators
- ◆ Self-adjusting packing
- ◆ Stainless steel stems
- ◆ Unique brackets and linkage allow easy field changes

Accessories

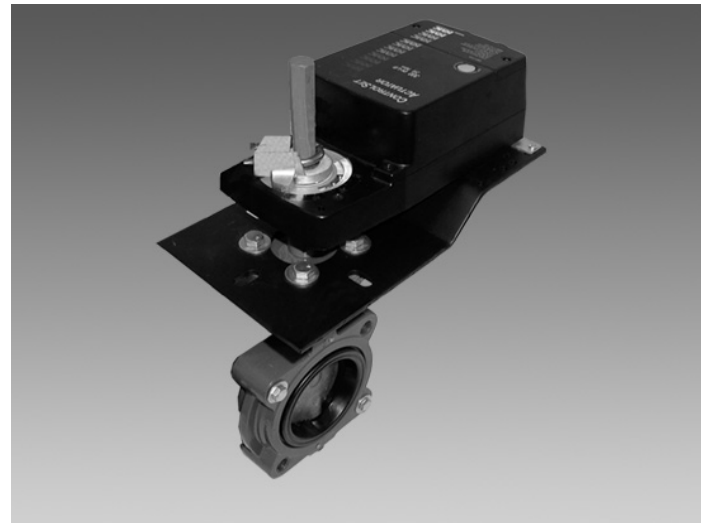
The following accessories are available:

CME-7001	Single end switch
CME-7002	Dual end switch

Consult with the factory when service conditions are higher than 50 psi and when optional valve materials or construction are required.

Specifications

Valve Size	2" through 12"
Body Type	ANSI 125 & 150 wafer style flange mating. 2" to 6" have full lug body alignment holes 8" to 12" have 4 alignment holes.
Flow Characteristics	Linear
Maximum Differential Pressure	50 psi for water (15 psi for steam)



Cv Rating @ 90° Rotation

2"=120; 2-1/2"=194; 3"=430;
4"= 830; 5"=1500; 6"=1680;
8" =3870; 10"=6540;
12"=9800

Pressure Drop (PSI) @ 90° Rotation

2"=0.76; 2-1/2"=0.59; 3"=0.29;
4"=0.23; 5"= .017; 6"=0.21;
8- 12"=0.15

Material

Body	Epoxy Coated Cast Iron
Disc	Aluminum Bronze
Seat	EPDM
Shaft	416 Stainless Steel
Bushing	Bronze

Temperature Limits

Media	25° to 250° F (-4° to 121° C) freeze protection required for fluid temperatures below 32°F (0° C)
Operating	0° to 120° F (-18° to 49° C)
Shipping	-40° to 140° F (-40° to 60° C)

Models

VEP-559XYZZZ

X		Y		ZZZ	
Size	X Value	Actuator Qty.	Y Value	Actuator (Choose one)	ZZZ Value
2"	1	1	1	100 in-lb MEP-1262, 2-10 VDC	845
				100 in-lb MEP-1263, 3-wire	856
				100 in-lb MEP-1272, 2-10 VDC, fail-safe	875
				100 in-lb MEP-1273, 3-wire, fail-safe	886
				150 in-lb MEP 7002, 2-10 VDC	645
				150 in-lb. MEP-7003, 3-wire	656
				150in-lb MEP-7052, 2-10 VDC, fail-safe	675
				150 in-lb MEP-7053, 3-wire, fail-safe	686
2 1/2"	2	1	1	150 in-lb MEP 7002, 2-10 VDC	645
				150 in-lb. MEP-7003, 3-wire	656
				150in-lb MEP-7052, 2-10 VDC, fail-safe	675
				150 in-lb MEP-7053, 3-wire, fail-safe	686
3"	3	1	1	300 In-lb MEP-7702, 2-10 VDC	945
4"	4			300 in-lb MEP-7703, 3-wire	956
				300 in-lb MEP-7752, 2-10 VDC, fail-safe	975
				300 in-lb MEP-7753, 3-wire, fail-safe	986
5"	5	2	2	300 In-lb MEP-7702, 2-10 VDC	945
6"	6			300 in-lb MEP-7703, 3-wire	956
				300 in-lb MEP-7752, 2-10 VDC, fail-safe	975
				300 in-lb MEP-7753, 3-wire, fail-safe	986
8"	7	1	1	1600 in-lb, 115 VAC,on/off, NEMA4 rating	575
				1600 in-lb,115 VAC,0-10 VDC, NEMA4 rating	577
10"	8	1	1	3500 in-lb, 115 VAC,on/off, NEMA4 rating	585
				3500 in-lb,115 VAC,0-10 VDC, NEMA4 rating	587
12"	9	1	1	3500 in-lb, 115 VAC,on/off, NEMA4 rating	585
				3500 in-lb,115 VAC,0-10 VDC, NEMA4 rating	587

Using the table (above) determine the "X", "Y" and "ZZZ" values that correspond to your application.

Examples of valid model numbers:

VEP-55911886: A 2" valve with one MEP-1273 actuator.

VEP-55962945: A 6" valve with two MEP-7702 actuators.

Examples of invalid model numbers:

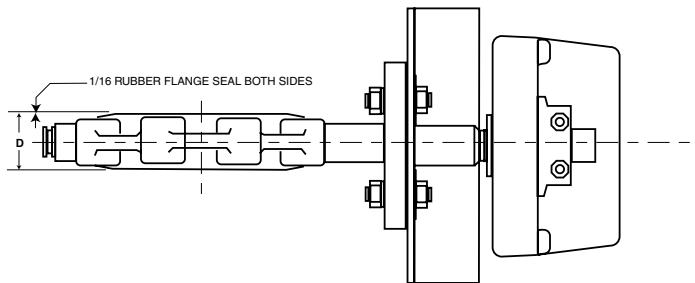
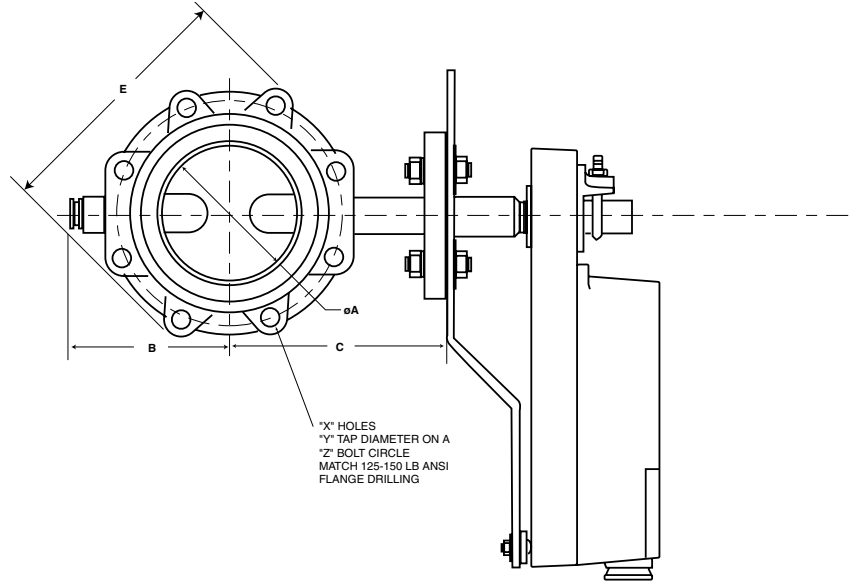
VEP-55972945: A request for an 8" valve with two MEP-7702 (300 in-lb) actuators. The correct part number would be VEP-55971577. An 8" valve with one 1600 in-lb 115 VAC actuator.

VEP55961975: A request for a 6" valve with only one actuator. All 5" and 6" valves must have two actuators. The correct model number should be VEP-55962975.

Details

Dimensions in inches (mm) and weight in pounds (kg)

SIZE	X	Y	Z
2	4	5/8-11 UNC	4.75
2-1/2	4	5/8-11 UNC	5.50
3	4	5/8-11 UNC	6.00
4	8	5/8-11 UNC	7.50
5	8	3/4-10 UNC	8.50
6	8	3/4-10 UNC	9.50
8	8	3/4-10 UNC	11.75
10	10	7/8-10 UNC	14.25
12	10	7/8-10 UNC	17



Valve dimensional drawings are shown with the MEP-7000 series ControlSet™ Actuators. Consult with KMC Controls' Technical Service for dimensional drawings if MEP-1200 series, dual MEP-7000 series, 1600 in-lb or 3500 in-lb actuators are required.

Models	A	B	C	D	E
VEP-55911ZZZ	2" (50.8)	2-7/8" (73.03)	5-3/4" (146.05)	1-5/8" (41.28)	5-15/16" (150.81)
VEP-55921ZZZ	2-1/2" (63.5)	3-1/8" (79.38)	6-1/4" (158.75)	1-3/4" (44.45)	6-11/16" (169.86)
VEP-55931ZZZ	3" (76.2)	3-1/2" (88.9)	6-1/2" (165.1)	1-3/4" (44.45)	7-1/4" (184.15)
VEP-55941ZZZ	4" (101.6)	4-1/2" (114.3)	7-1/4" (184.15)	2" (50.8)	8-3/4" (222.25)
VEP-55952ZZZ	5" (127)	5-5/8" (142.88)	7-3/4" (196.85)	2-1/8" (53.98)	9-7/8" (250.83)
VEP-55962ZZZ	6" (152.4)	6-1/2" (165.1)	8-3/8" (212.73)	2-1/8" (53.98)	11" (279.4)
VEP-55971ZZZ	8" (203.2)	7-5/8" (193.68)	9-5/8" (244.48)	2-3/8" (60.33)	12-3/4" (323.85)
VEP-55981ZZZ	10" (254)	9-1/8" (231.78)	11" (279.4)	2-3/4" (69.85)	13-3/8" (339.73)
VEP-55991ZZZ	12" (304.8)	10-3/8" (263.53)	12-1/2" (317.5)	3" (76.2)	16-1/8" (409.58)

KMC Controls, Inc.
19476 Industrial Drive
New Paris, IN 46553
574.831.5250
www.kmccontrols.com