

Description

These control valves are designed to regulate the flow of hot or chilled water to VAV terminal unit reheat coils, fan coil units and induction units. The VEP-11 and 12 models utilize a straight-through body design, while the VEP-21 and 22 utilize a right angle body design.

The compact design of these units allows easy installation within small enclosures. The fully enclosed electric actuator has heat-resistant lead wires and is readily installed or removed via a screw-on ring nut. Each control valve actuator utilizes a PTC thermal element for dependable long-life and noise-free operation.

Valve bodies are all normally open. The actuator determines the normally open or normally closed function.

Features

- ◆ Straight through or right-angle body designs
- ◆ Compact size
- ◆ Heat-resistant lead wires
- ◆ Fully enclosed electric actuator

Accessories/Repair Parts

The accessories and repair parts are available for these models:

HMO-4530	Flexible conduit connector
HPO-5021	3/4" union nut
HPO-5022	1" union nut
HPO-5030	1/2" bonnet assembly; 2.00 Cv
HPO-5031	1/2" bonnet assembly; 2.60 Cv
HPO-5032	3/4" bonnet assembly; 2.95 Cv
HPO-5033	3/4" bonnet assembly; 4.25 Cv
HPO-5035	1/2" bonnet assembly; 1.60 Cv
HPO-5037	1" bonnet assembly; 5.00 Cv
HPO-5055	Amplifier for normally closed valves
HPO-5058	1/2" union nut
HPO-5059	1/2" MPT union
HPO-5062	3/4" MPT union
HPO-5063	1" MPT union
HPO-5064	1/2" replacement disc; 1.60 Cv
HPO-5065	1/2" replacement disc; 2.00 Cv
HPO-5066	1/2" replacement disc; 2.60 Cv
HPO-5067	3/4" replacement disc; 2.95 Cv

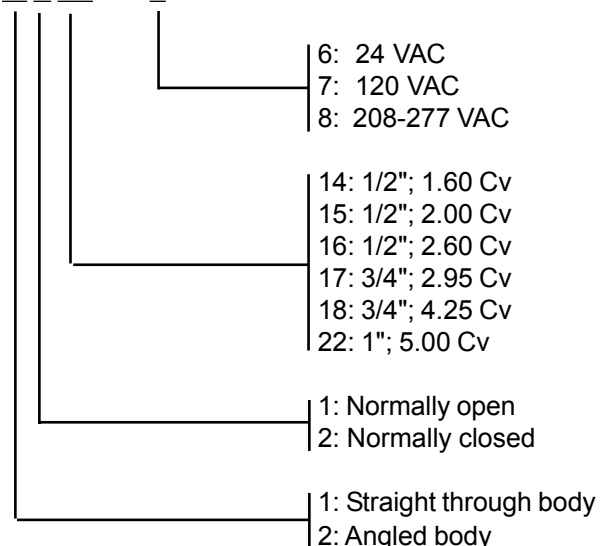


HPO-5068	3/4" replacement disc; 4.25 Cv
MEP-3001	24 VAC normally closed actuator
MEP-3002	120 VAC normally closed actuator
MEP-3003	208-277 VAC normally closed actuator
MEP-3006	24 VAC normally open actuator
MEP-3008	208-277 VAC normally open actuator

Models

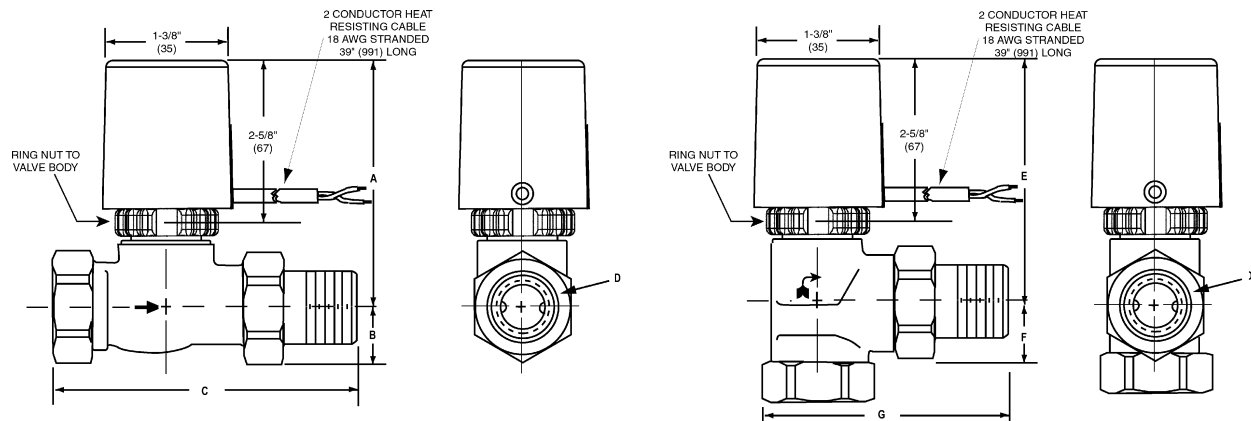
Use the following chart to make your model selection:

VEP- W X YY 018 Z



Details

All dimensions in inches (mm).



VEP-11, 12 SERIES						VEP-21, 22 SERIES				
DIMENSION		A	B	C	D	WEIGHT	E	F	G	WEIGHT
1/2"	Cv: 1.60	3-5/32" (80)	21/32" (17)	3-9/16" (91)	1/2" MPT	1 lb. (.45 kg)	3-5/32" (81)	1" (25) (25)	2-3/4" (70)	1.00 lb. (.45 kg)
	Cv: 2.00					1.05 lb. (.48 kg)				1.05 lb. (.48 kg)
	Cv: 2.60									
3/4"	Cv: 2.95	3-7/32" (82)	13/16" (21)	4-7/16" (113)	3/4" MPT	1.2 lb. (.54 kg)	3-1/8" (79) (79)	1-1/8" (29)	3-13/32" (87)	1.20 lb. (.54 kg) (.54 kg)
	Cv: 4.25	3-7/16" (87) (89)				1.4 lb. (.64 kg)				3-9/32" (83)
1"	Cv: 5.00	3-3/8" (86)	1-1/16" (27)	5-9/16" (141)	1" MPT	1.84 lb. (.83 kg)	3-3/8" (86)	1-1/2" (38)	3-27/32" (98)	1.84 lb. (.83 kg) (.83 kg)

Specifications

Action

Normally Open VEP-11/21 Series
Normally Closed VEP-12/22 Series

Sizes & Cv Ratings

1/2" 1.60, 2.00 and 2.60 Cv
3/4" 2.95 and 4.25 Cv
1" 5.00 Cv

Maximum Differential

N.O./ N.C.	N.C. w/HPO-5055
1/2", 1.60 Cv/ 130 psi (896 kPa)	145 psi (1000 kPa)
1/2", 2.00 Cv/ 70 psi (482 kPa)	105 psi (724 kPa)
1/2", 2.60 Cv/ 38 psi (262 kPa)	57 psi (393 kPa)
3/4", 2.95 Cv/ 50 psi (344 kPa)	76 psi (524 kPa)
3/4", 4.25 Cv/ 13 psi (89 kPa)	20 psi (138 kPa)
1", 5.00 Cv/ 16 psi (110 kPa)	24 psi (165 kPa)

Actuator Voltages 24 VAC (MEP-3001, 3006)
120 VAC (MEP-3002)
208-277 VAC (MEP-3003, 3008)

Power 3 watts operating; 14 watts average cold start-up surge

Stroke Timing Body Ratings*

3 minutes, full stroke
168 psi (1163 kPa) hot water
232 psi (1599 kPa) cold water

Connections

Inlet FPT
Outlet MPT

Material

Body and Seat Bronze
Packing Double O-ring
Disc EPDM
Stem Stainless Steel

Temperature Limits

*Medium 35.6° to 212° F (2° to 100° C)
Operating 32° to 120° F (0° to 49° C)
Shipping 0° to 140° F (-18° to 60° C)

KMC Controls, Inc.
19476 Industrial Drive
New Paris, IN 46553
574.831.5250
www.kmcccontrols.com