

Description

KMC REE-5001 relay modules are designed primarily for use with VAV terminal units in HVAC systems. When used in conjunction with CTE-5100 series room thermostats, up to three stages of reheat may be controlled.

Each output circuit is capable of handling contactors of up to 10 VA @ 24 VAC. The three circuits are calibrated to actuate at equally spaced intervals across the thermostat's proportional band.

By using the REE-5001, the heating requirements of a particular VAV terminal may be actuated in three separate steps affording more precise temperature control.

Features

- ◆ Controls up to three stages of reheat when used with CTE-5100 series thermostats)
- ◆ Each output capable of handling contactors of up to 10 VA @ 24 VAC
- ◆ Each stage calibrated to actuate at equally spaced intervals across the thermostat's proportional band
- ◆ Simple installation

Application

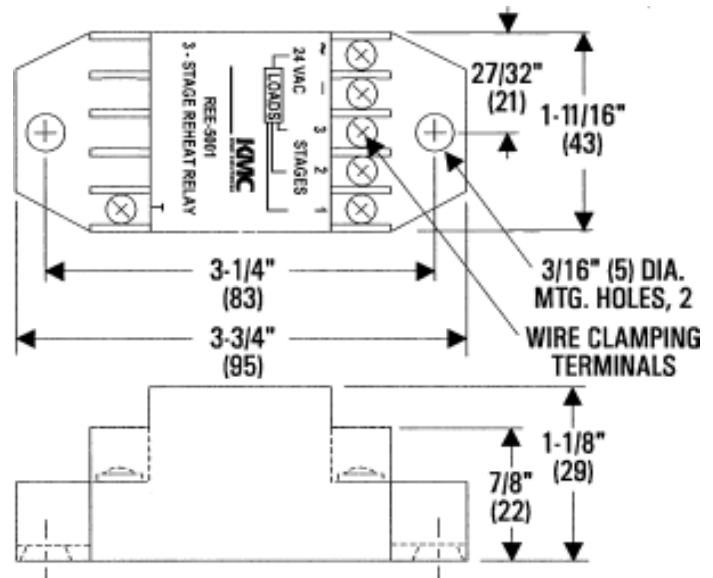
The KMC REE-5001 Relay Module is intended for use with CTE-5104 thermostats.

Specifications

Supply Voltage	24 VAC, +20%/-15% @ 1 VA plus output loads
Input Signal	0 to 10 VDC
Output Capacity	10 VA per stage @ 24 VAC
Connections	Plated screw terminals
Wire Size	14 -22 AWG, stranded
Material	Beige ABS, UL Flame Class 94 HB
Weight	2 oz. (57 grams)
Temperature Limits	
Operating	40° to 120° F (4° to 49° C)
Shipping	-40° to 140° F (-40° to 60° C)



All dimensions are in inches (mm)



KMC Controls, Inc.
 19476 Industrial Drive
 New Paris, IN 46553
 574.831.5250
www.kmccontrols.com