

Description

The KMC REE-4106 relay module is designed primarily for the proportional control of electric hot water valves on VAV terminal units in HVAC systems.

The percent on-time of the electric hot water valve varies in direct proportion to the CTE series room thermostat signal. As the thermostat signal increases, the percent on-time of the electric hot water valve increases.

The REE-4106 must be used in conjunction with VEP series 2-way and 3-way hot water valves. Up to three VEP valves may be powered from an individual REE-4106.

Each module contains a built-in 9.1 VDC power supply which can be used to power any CTE room thermostat (except CTE-5100 Series) when a VAV box flow controller is not used.

Features

- ◆ Valve percent on-time varies in direct proportion to the thermostat signal.
- ◆ Built-in 9.1 VDC power supply available to power certain CTE series thermostats
- ◆ Simple installation



Application

The KMC REE-4106 Relay Module is intended for use with the following:

Associated Controllers/Actuators:

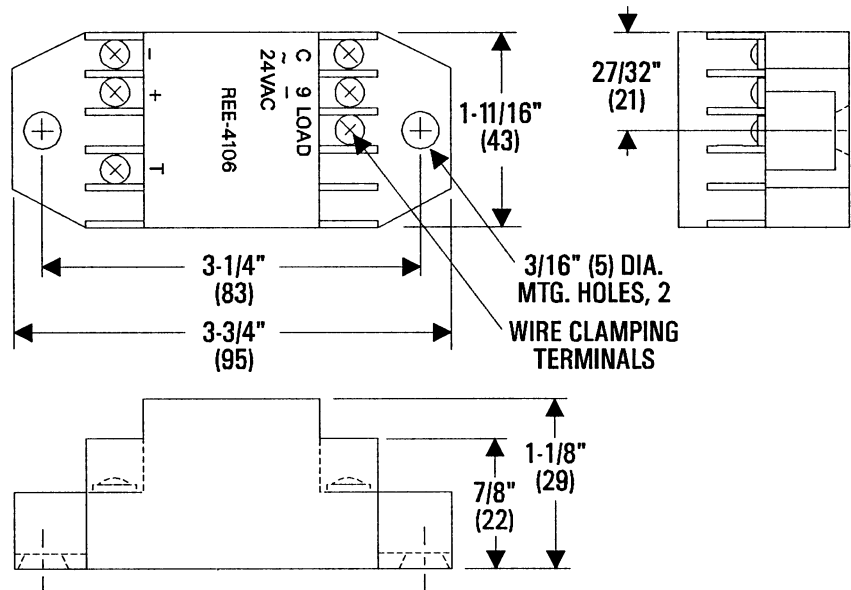
CEE-4000 Series
CEP-4000 Series
CSE-4000 Series
CSP-4000 Series

Associated Thermostats:

CEE-1102
CTE-1004
CTE-1103

Details

All dimensions are in inches (mm)



Specifications

Supply Voltage 24 VAC, +20%/-15% @ 1 VA

Input Signal 0-6 VDC

Output Capacity 10 VA max. @ 24 VAC

Thermostat Power Supply 9.1 VDC, ±10%

Associated Valves

VEP-12/22 2-way

VEP-34/37 3-way

Connections Plated screw terminals

Wire Size 14-22 AWG, stranded

Material Beige ABS, UL Flame Class 94 HB

Weight 2 oz. (57 grams)

Temperature Limits

Operating 40° to 120°F (4° to 49°C)

Shipping -40° to 140°F (-40° to 60°C)

KMC Controls, Inc.

19476 Industrial Drive

New Paris, IN 46553

574.831.5250

www.kmcccontrols.com