

Description

The KMC REE-2002 is designed for use with THE-1102 (THE-1101) humidity transmitters. It provides the power supply for the transmitters from a 24 VAC or VDC power source, and additional outputs of 10 VDC and 4 to 20 mA.

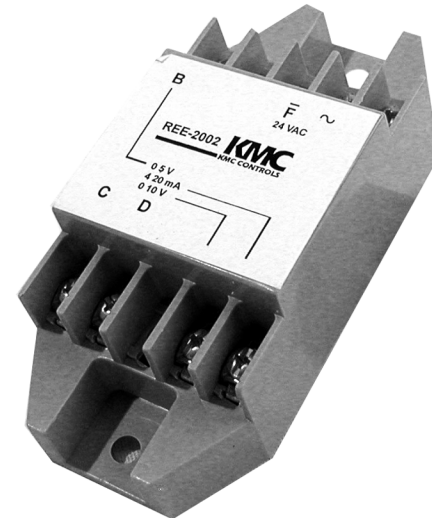
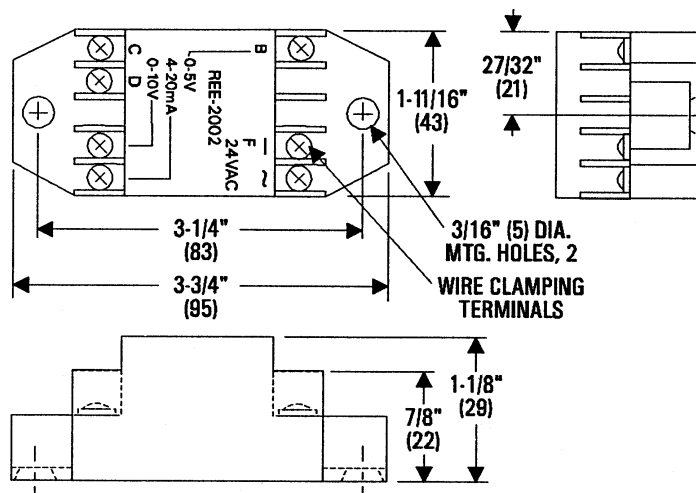
The REE-2002 may also be used to convert 0 to 5 VDC signals from building automation systems to 0 to 10 VDC or 4 to 20 mA signals.

Features

- ◆ Converts 24 VAC or VDC power sources into supply voltage for THE-1102 (THE-1101) humidity transmitters
- ◆ Provides 10 VDC or 4-20 mA outputs
- ◆ Simple installation

Details

All dimensions are in inches (mm)



Specifications

Supply Voltage 24 VAC +20%/-15%

28 to 40 VDC

Input Power

0.75 VA at 24 VAC

9.5 mA at 28 VDC

Output Capacity

0-10 VDC output into 1000 ohm

4-20 mA output (24 VAC supply) into 650 Ω, max

4-20 mA output (28 VDC supply) into 650Ω, max

Connections

Plated screw terminals

Wire Size

14-22 AWG, stranded

Material

ABS, UL Flame Class 94 HB

Weight

2 oz. (57 grams)

Temperature Limits

Operating 40° to 120° F (4° to 49° C)

Shipping -40° to 140° F (-40° to 60° C)

KMC Controls, Inc.

19476 Industrial Drive

New Paris, IN 46553

574.831.5250

www.kmcccontrols.com