

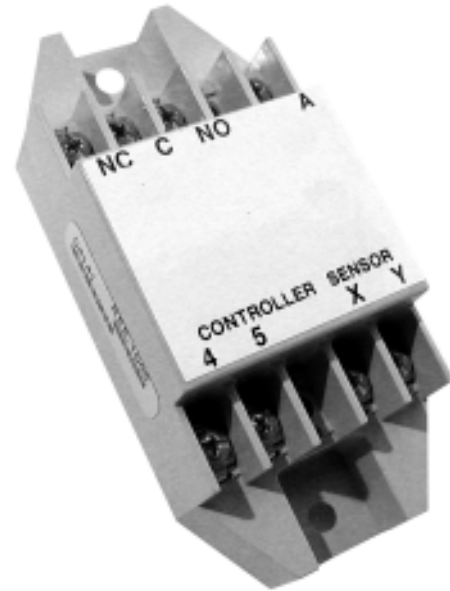
Description

The KMC REE-1005 Relay Module is designed primarily for automatic heating /cooling changeover applications on single duct VAV terminal units in HVAC systems.

Used in conjunction with the SSE-2000 series sensors the REE-1005 has the ability to change the action of the VAV terminal to either heating or cooling based on the temperature of the supply air to the VAV terminal.

Features

- ◆ Automatic Heat/Cool changeover
- ◆ Simple installation



Application

KMC REE-1005 Relay Modules are intended for use with the following:

Associated Controllers-Actuators:

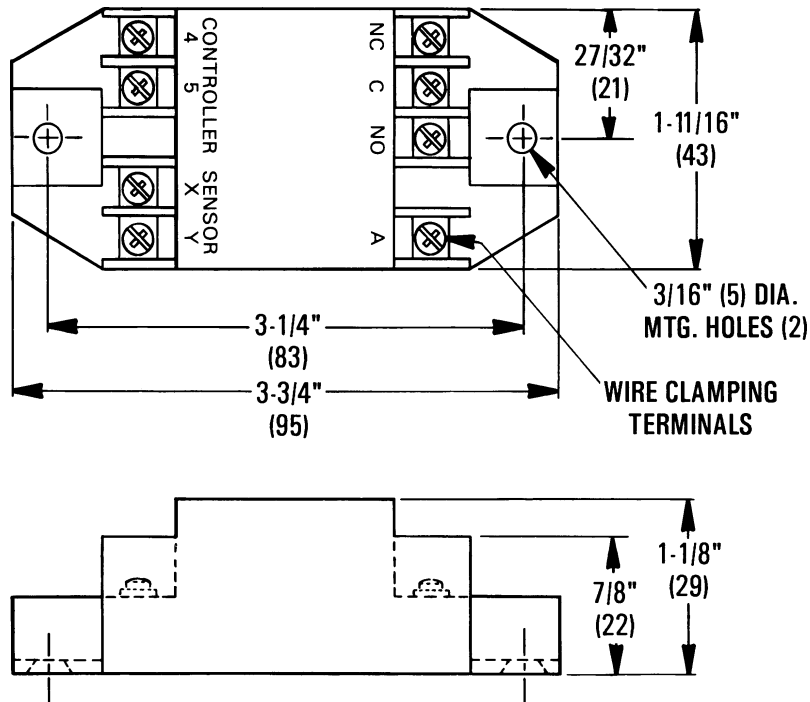
CEE-4000 Series
CEP-4000 Series
CSE-4000 Series
CSP-4000 Series
CSP-5001

Associated Thermostats:

CEE-1103
CTE-1103
CTE-5103

Details

All dimensions are in inches (mm)



Specifications

Supply Voltage	9.1 to 18 VDC (2 mA)
Contact Voltage	Normally Closed (NC) = Supply voltage minus 1 VDC Common (C) = Supply voltage minus 1 VDC Normally Open (NO) = Supply voltage minus 1 VDC
Setpoint	77° F \pm 4° F (25° C \pm 2° C)
Connections	Plated screw terminals
Wire Size	14 – 22 AWG, stranded
Material	ABS, UL Flame Class 94HB
Weight	2 oz. (57 grams)
Temperature Limits	
Operating	40° to 120°F (4° to 49°C)
Shipping	-40° to 140°F (-40° to 60°C)

KMC Controls, Inc.
19476 Industrial Drive
New Paris, IN 46553
574.831.5250
www.kmcccontrols.com