

### **Description**

The KMC CTE-3017 Low Level Controller is a DPDT device designed for use on HVAC equipment requiring low-temperature control and/or indication in duct work or on heating/cooling coils.

On a decrease in sensed temperature, the unit will actuate at its setpoint and will not reset until the reset button is pushed. A reset cannot be accomplished until the sensed temperature is at least 5° above the setpoint. A test lever, located under the cover, allows the unit to be manually actuated to facilitate system checkout.

In order to use in stratified airstreams, the unit will respond to the lowest temperature sensed in any one foot section of the sensing element.

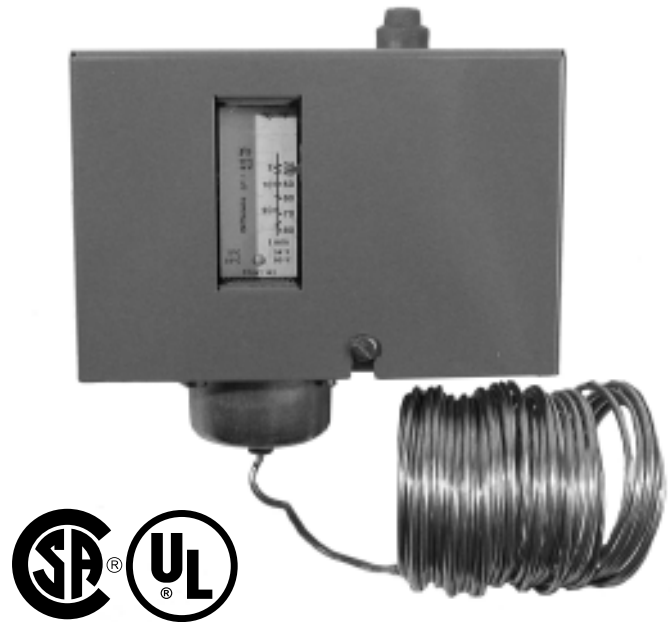
To facilitate installation of the 20 foot capillary, five HMO-4523 capillary mounting clips are shipped with each model.

### **Features**

- ◆ Manual lever for testing
- ◆ Setpoint indication display

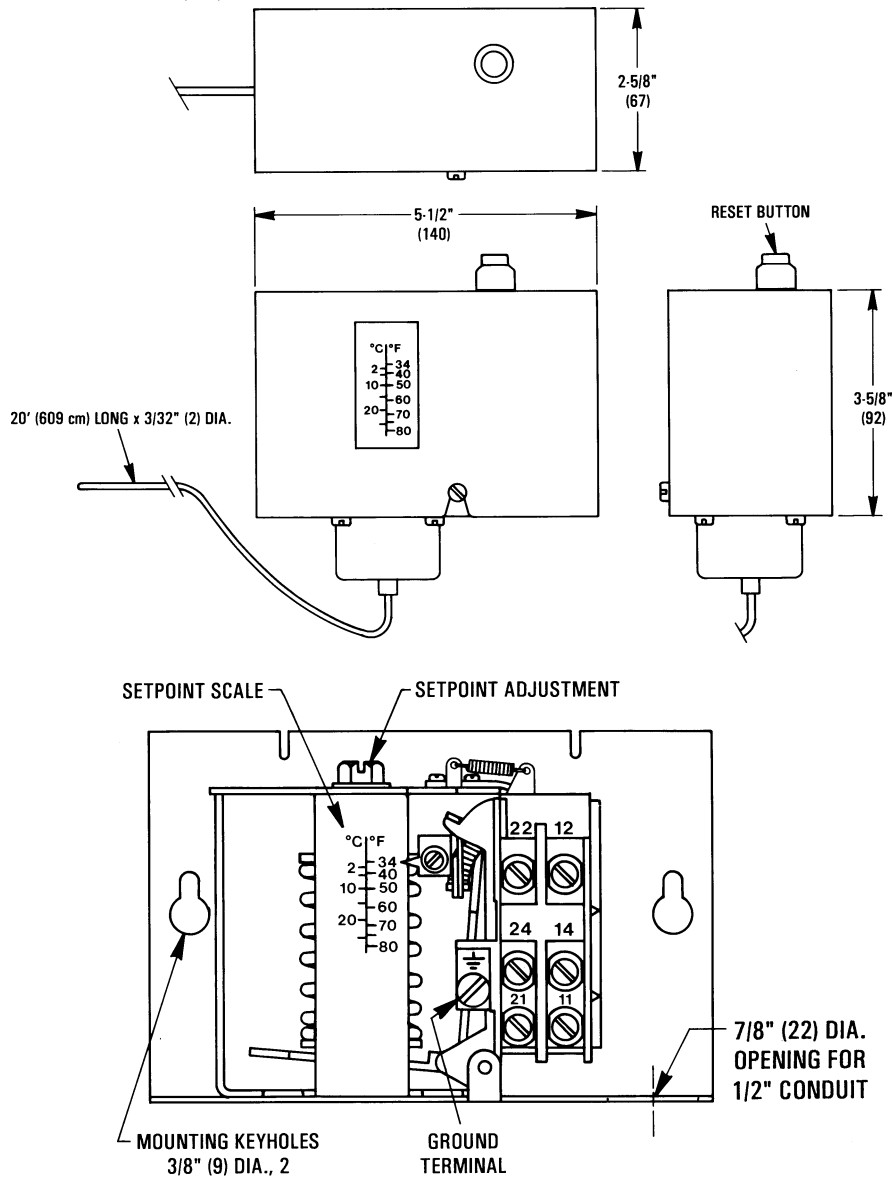
### **Accessories**

HMO-4523      Capillary Clip (5 provided)



# Details

All dimension are in inches (mm)



## Specifications

<b>Range</b>	34° to 70° F (1.1° to 21° C)	<b>Pilot Duty</b>	720 VA max @ 120 to 600 VAC
<b>Differential</b>	4.5° F fixed (2.5° C)		144 VA, max @ 24 VAC
<b>Switch Action</b>	DPDT	<b>Approvals</b>	U.L., C.S.A
<b>Element</b>	20' (610 cm) tin plated copper capillary, maximum temperature 300° F (149° C)	<b>Weight</b>	1.2 lbs (.54 kg)
<b>Electrical Ratings</b>		<b>Temperature Limits</b>	
Inductive	14 F.L.A. @ 120 VAC	Operating	-60° to 160° F (-51° to 71° C)
	12 F.L.A @ 240 VAC	Shipping	-60° to 160° F (-51° to 71° C)
	84 L.R.A. @ 120 VAC		
	72 L.R.A. @ 240 VAC		
	3/4 HP @ 120 VAC.		
	2 HP @ 240 VAC		

**KMC Controls, Inc.**  
 19476 Industrial Drive  
 New Paris, IN 46553  
 574.831.5250  
[www.kmcccontrols.com](http://www.kmcccontrols.com)