



CEE-2004, 2007, 2104, 2204 For Replacements Only: Proportional Fan Coil Unit Controllers 4-Pipe Htg.Clg; 2-Pipe Htg; 2-Pipe Clg

Description

These CEE-2000 Series solid state electronic control modules are designed to provide modulating hydronic control for 4-Pipe Heating/Cooling Fan Coil Units, or for 2-Pipe Heating or 2-Pipe Cooling Fan Coil Units. Modules are available for 120, 208-240 or 277 VAC systems.

The CEE-2000 series are designed to work in combination with the YME-2000 Room Temperature Setpoint/Fan Speed Selector, the STE-1002 Return Air Sensor and the VEP-11/12/21/22 Series valves. The CEE will maintain the desired space temperature by sensing the return air temperature and utilizing time proportional control to modulate the VEP heating and or cooling valves based on the setpoint of the YME Room Temperature Setpoint/Fan Speed Selector.

Features

- ◆ Solid state electronics
- ◆ Available in 120, 208-240 or 277 VAC
- ◆ Works with 4-Pipe heating/cooling, 2-Pipe heating, or 2-Pipe cooling fan coil units

Application

The CEE-2004, 2104, 2007 and 2107 are available as after-market replacement parts.



Models

Normally Closed Heating and Cooling

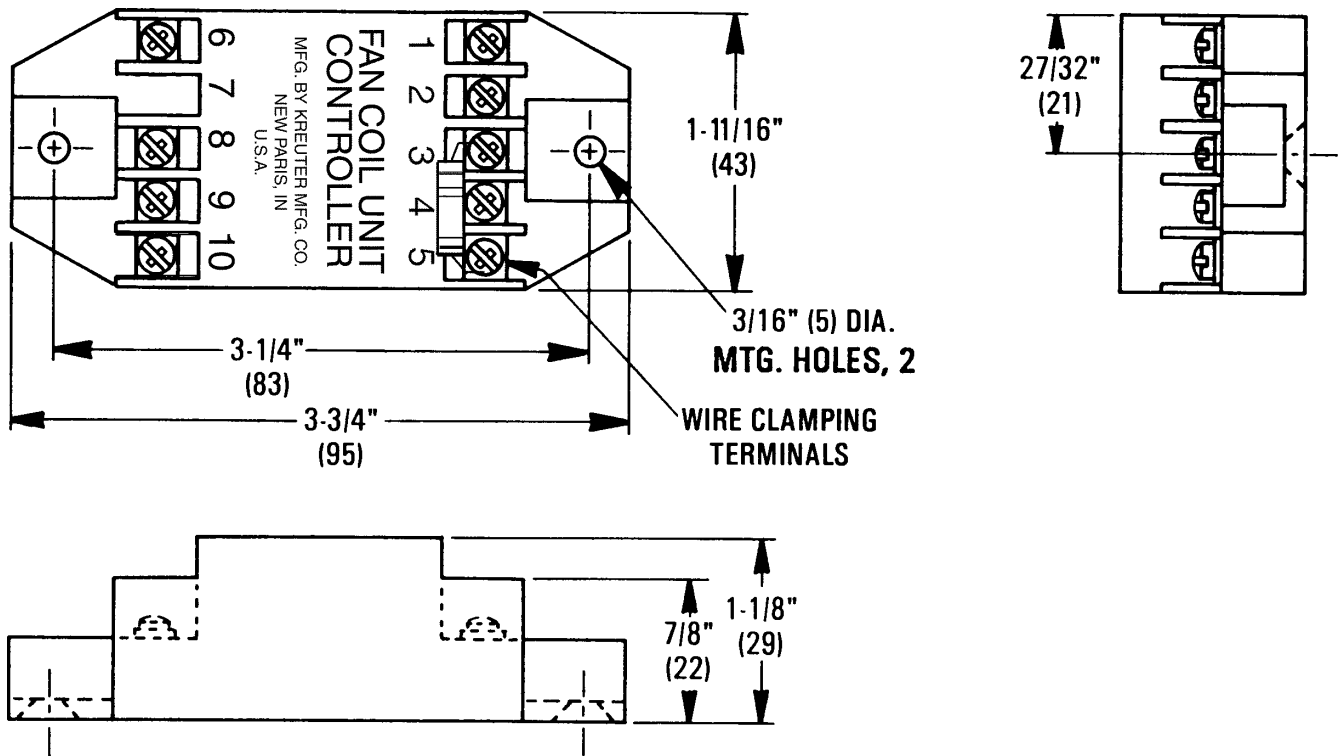
CEE-2004	120 VAC
CEE-2104	208-240 VAC
CEE-2204	277 VAC

Normally Open Heating, Normally Closed Cooling

CEE-2007	120 VAC
CEE-2107	208-240 VAC
CEE-2207	277 VAC

Details

All dimensions are in inches (mm).



Specifications

Supply Power	CEE-2004, 2007; 120 VAC	Wire Size	14 to 18 AWG.	
	CEE-2104, 2107; 208-240 VAC		Material	Black Polycarbonate, UL Flame Class 94 HB
	CEE-2204, 2207 ; 277 VAC			
Inputs	Room Temperature Set-Point; YME-2002, 4.46K to 18.06K ohm	Weight	2 oz. (57 grams)	
	Return Air Temperature; STE-1002, 10K ohm at 77° F (25° C)		Temperature Limits	Operating 40° to 120° F (4° to 49° C) Shipping -40° to 140° F (-40° to 60° C)
	Outputs	Time Proportioning; Cold Water Valve, VEP Series, 3 Watts (supply voltage)		KMC Controls, Inc. 19476 Industrial Drive New Paris, IN 46553 574.831.5250 www.kmccontrols.com
Time Proportioning; Hot Water Valve, VEP Series, 3 Watts (supply voltage)				
Connections	Screw terminals, plated			